

GEMINI HOMES

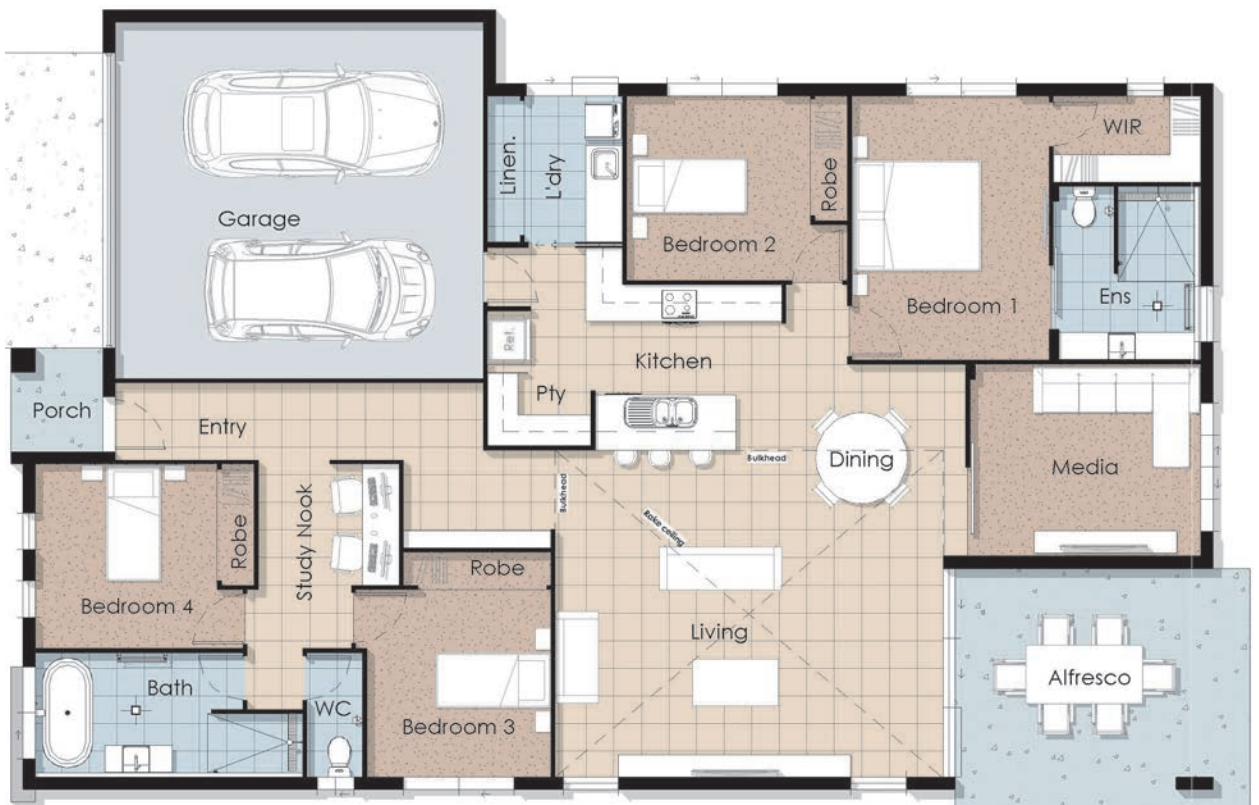
The Stradbroke 230 (Ver2021)

Traditional Facade



*Illustration only

The Stradbroke Series



4		Living Area:	170.43m ²
2		Garage Area:	37.44m ²
2		Porch Area:	2.55m ²
2		AlfrescoTOTAL:	20.16m ²
		TOTAL AREA:	230.58m ²
1		House Length:	19.3m
		House Width:	12.7m

Starting from



.00*

geminihomes.com.au 0749512 664 Find us on

All drawings are artistic impressions only. Any furniture shown is for illustration purposes only and not included in the price. Gemini Homes (QLD) Pty Ltd reserves the right to change prices and inclusions without notice or obligation. All plans are exclusively owned by Gemini Homes (QLD) Pty Ltd and must not be copied or reproduced wholly or in part in any form without written permission of Gemini Homes (QLD) Pty Ltd. This includes making changes with intent to change the plan by 10% or more. Any infringement on this Copyright will result in legal action being taken by Gemini Homes (QLD) Pty Ltd against all parties involved. Please note minimum width measurements are subject to individual site plans.

QBCC: 1120226



Est. Mackay 1994

The Stradbroke Series



Contemporary Facade



Hampton Facade

*Facade Options are additional to the Starting From price.

For further details please contact one of our New Home Consultants.



geminihomes.com.au 0749512 664 Find us on 

All drawings are artistic impressions only. Any furniture shown is for illustration purposes only and not included in the price. Gemini Homes (QLD) Pty Ltd reserves the right to change prices and inclusions without notice or obligation. All plans are exclusively owned by Gemini Homes (QLD) Pty Ltd and must not be copied or reproduced wholly or in part in any form without written permission of Gemini Homes (QLD) Pty Ltd. This includes making changes with intent to change the plan by 10% or more. Any infringement on this Copyright will result in legal action being taken by Gemini Homes (QLD) Pty Ltd against all parties involved. Please note minimum width measurements are subject to individual site plans.

QBCC: 1120226

Est. Mackay 1994